



Quaker Hill Elementary School

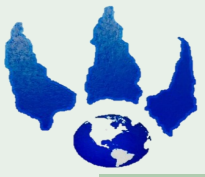
Christopher Discordia, Principal

cdiscordia@waterfordschools.org



HAPPY
Holidays!

Happy Holidays
from the Staff at
Quaker Hill School!
We will see everyone
on Tuesday
January 2nd, 2024!



Quaker Hill News



Mon December 25th-Monday January 1st
No School—Winter Break

Mon January 15th
No School

Week of January 1st-6th

Monday - No School

Tuesday - D

Wednesday - A

Thursday - B

Friday - C

Lunch Menu for the week of January 1st-6th

Mon: No school

Tue: Cheesy Italian pull aparts, marinara sauce, broccoli, ranch, cucumber slices, diced peaches, milk

Wed: Diced chicken taco salad, tostitos, salsa, corn, beans, Sidekick, milk

Thu: Spaghetti & meatballs, sauce, green beans, garlic knot, diced pears, milk

Fri: Chicken nuggets, smile fries, peas, dinner roll, applesauce, milk

SPRING 2024

WATERFORD YOUTH LACROSSE

REGISTER ONLINE NOW!

www.waterfordyouthlacrosse.org

Grades K-8

Instructional (K-2): \$30

Equipment available to borrow for the season. No USA Lacrosse Membership or Uniform required.

Travel Teams: \$185 *Includes Uniform*

10U Grades 3-4

12U Grades 5-6

14U Grades 7-8

****NEW Custom & Personalized Uniforms for all Travel Players****

All travel players must have a valid USA Lacrosse Membership

www.usalacrosse.com

REGISTRATION CLOSES ON 2/1

**Grab your stick and
let's dominate the field
in the 2024 season!**



**Recruit a
friend...score a
WYLA gift!**



Follow us
[@waterfordyouthlacrosse](https://www.instagram.com/waterfordyouthlacrosse)





WATERFORD
Youth & Family
Services

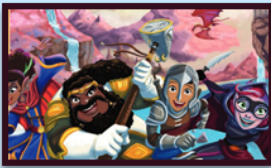
Winter Afterschool Programs

10 week programs start week of Jan 8th

**Healthy Snack
Provided each
class!**

Waterford Public
School students can
take bus from school
directly to the
Community Center!

**Classes fill up
quickly, be sure to
create a profile
using the link
below.**

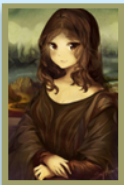


Dungeons and Dragons

Are you ready to embark on an epic journey filled with mythical creatures, daring quests, and endless adventure? Join our after-school Dungeons & Dragons classes and unleash your imagination in a world of magic and mystery! Throughout the program, you'll learn the art of teamwork and creativity, working with fellow adventurers to overcome challenges, create unforgettable stories, and develop unique characters with their own backgrounds and abilities. Sharpen your critical thinking and

decision-making skills as you face unexpected situations in a dynamic and ever-changing world. Every week, embark on thrilling campaigns filled with epic battles, intriguing NPCs, and epic quests!

- **Mondays 4th & 5th Grades [Dismissal— 5:45pm]**
- **Tuesdays Middle School A [Dismissal— 5:30pm]**
- **Wednesday Middle School B [Dismissal— 5:30pm]**
- **Thursday High School [Dismissal— 5:00pm]**



FINE ARTS AND ANIME

Unleash your creativity in a captivating artistic journey that blends the best of Western fine arts with the enchanting world of Japanese influence and anime. Our art program is designed especially for middle to high school students, offering a unique opportunity to explore the rich traditions of both worlds while embracing modern pop culture.

Tuesdays Middle School [Dismissal— 5:30pm]



MIXED MEDIA ART

We're calling all elementary schoolers to embark on a vibrant journey into mixed media art! Discover the thrill of combining paint, paper, fabric, and more to breathe life into your imagination. Our expert instructors will guide you through hands-on projects, from captivating collages to whimsical 3D creations. Boost your creativity, problem-solving skills, and passion for art in this unforgettable artistic adventure. Join now and let the magic of mixed media art unleash your inner artist! **Wednesdays 1st thru 5th grade [Dismissal— 5:30pm]**



Cooking with Class

Discover the art of cooking with our Middle School Chef Program! Join our expert chef to learn essential skills, explore flavors, and create delicious meals! Tuesdays: Grades 6th thru 8th.

Tuesdays Middle School [Dismissal— 5:30pm]



Waterford Whiskers: Baking 101

Unleash your baking talents with our Waterford Whiskers Program! Discover the joy of creating sweet masterpieces, gain essential skills, and let your creativity rise to new heights! Tuesdays: Grades 3rd thru 5th

Wednesdays 1st thru 5th grade [Dismissal— 5:30pm]

REGISTRATION IS NOW OPEN!

Create a profile and register here: waterfordyouthfamily.recdesk.com/Community/Home or scan the QR code to the right.



FAMILY PROGRAMS

Friday, December 29, 2:00PM - 4:00PM

Family Movie Matinee

Join us during your school vacation for a family friendly movie. Bring your blankets, pillows, and snacks down to the meeting room for a cozy winter afternoon. All ages are welcome, no registration required. Check our website for movie details.



Saturday, December 2, 10:30AM - 11:30AM AND Saturday, December 16, 2:30PM - 3:30PM
Read to Scout

We are excited to welcome a new certified therapy dog to the library! Come practice your reading skills and give Scout a cuddle in the Children's Room. All ages are welcome, no registration required.

Tuesday, December 5, 4:00PM - 5:00PM

Read to Hodges

Stop by the Children's Room anytime between 4:00 and 5:00 pm to read to our favorite furry friend, Officer Hodges! No registration required, all ages welcome.



Monday, December 11, 4:00PM - 5:00PM

Fantasy Book Club

Bring your favorite fantasy book to life with fellow adventurers - you choose the book! We will also make a fun craft. See you in the realm of fantasy! Recommended for ages 9 to 12 years old, registration is required.

Tuesday, December 26, 1:00PM - 2:00PM AND 4:30PM - 5:30PM

Cookie Decorating

Bring your culinary creative vision to life with our holiday cookie decorating program! For ages 4 and up, registration is required. Please only register for one session of cookie decorating.



Wednesday, December 27, 3:00PM - 4:00PM

Local Author Visit

Join us for a fun and interactive visit from local author Judy Ricketts-White! Judy will share her stories and lead the group through some writing and drawing activities. Copies of her Slater Mountain series and coloring books will be available for purchase. Recommended for ages 8 and up, registration recommended.

Thursday, December 28, 2:00PM - 3:00PM

Fossils to Footprints

Join presenters from the Niantic Children's Museum for this fun, hands-on event. Go back to prehistoric times to discover what fantastic creatures roamed the earth! Find out what they may have looked like, acted like, and ate. Recommended for ages 5 and older, no registration required.

Mondays, December 4, 11 & 18, 10:30AM - 11:00AM

Family Storytime

Get ready to read and get your wiggles out! Join Ms. Jenna at the library for some fun stories, songs, and dancing. Recommended for ages birth to five years old with a caregiver. No registration is required.



All programs are free and open to the public

DROP IN CRAFTS

Monday, December 4, 4:00PM - 6:30PM

Drop In STEM Adventure: Grow a Rainbow Experiment

Join us in the Children's Room between 4:00 and 6:30 pm to create a stunning rainbow using water, markers, and tissue paper! Recommended for ages 5 and up, no registration required.



Tuesday December 12, 4:00PM - 6:00PM

Build Club



Stop by the Children's Room anytime between 4:00 and 6:00 pm to build with a variety of STEM sets that we have!

Recommended for ages 4 and older, no registration required.

Monday, December 18, 4:00PM - 6:30PM

Drop in Craft: Snowglobe Ornament

Join us in the Children's Room anytime between 4:00 and 6:30 pm to create an adorable Holiday Snowglobe Ornament. Recommended for ages 5 and up, no registration required.



Thursday, December 14, 4:30PM - 5:30PM

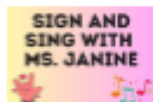
DIY Instruments: NYE Noisemakers

Ready to create, play, and dance? Join us for this DIY instrument program in which kids will learn how to make noisemakers for New Year's Eve! Registration required. Recommended for children ages 6-10 years. All materials will be provided.

Saturday, December 16, 10:30AM - 11:00AM

Sign and Sing

Join Ms. Janine for Sign and Sing! This fun storytime will include basic signs that both children and their caregivers will benefit from knowing. For ages birth to 5, no registration required. Thank you to CT Humanities for providing funding for this program.

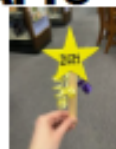


GRAB & GO CRAFTS



Acorn

Dec 2 to Dec 15



New Year's Eve Craft

Dec 16 to Dec 29

Pick up supplies in the Children's Room to make Grab & Go crafts at home, while supplies last.

Step-by-step video tutorial on our Facebook page

([@waterfordpubliclibrary](https://www.facebook.com/waterfordpubliclibrary)).

TEEN CORNER

Thursday, December 7, 5:30PM - 7:00PM

Craft Night

At this craft night, participants will learn how to make a mini mechanical sculpture featuring flying snowy owls! All materials will be provided. Recommended for ages 11 and up. Registration required.

Thursday, December 21, 5:30PM - 7:00PM

Teen Drop In Craft

Drop in to the Teen Section of the library anytime between 5:30 and 7:00 p.m. to make a Winter Solstice craft. Ages 12 and up. No registration required.



Thursday, December 28, 5:30PM - 7:00PM

Teen Bullet Journal Class

Do you want to get organized and motivated for the New Year? Join Miss Ashlee and learn how to create a bullet journal for 2024! All materials will be provided. Registration required. Ages 12-18.



Friday, December 8, 11:00AM - 12:00PM

Toddler Craft: Snowman Photo Craft

Join us for a fun-filled crafting session where the little ones will use their creativity, and fine motor skills to put together a snowman and give it a personal twist with their adorable faces. Please bring a photo of your face to make it uniquely yours! For ages 3 to 5 years old, no registration is required.



Friday, December 15, 11:00AM - 11:45AM

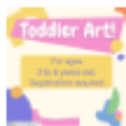
Story and Sensory Play

Join Miss Ashlee for a story and then explore multiple sensory stations! Recommended for ages 2 to 5 years old with a caregiver. No registration required.

Wednesday, December 20, 11:00AM - 11:45AM

Toddler Art

This hands on art session is for young ones to explore through process art with the help of their adult. Miss Ashlee will start the session with a short story! For ages 3 to 5 years old, registration is required.



To keep up with all our activities follow us on Facebook and Instagram



[@waterfordpubliclibrary](https://www.facebook.com/waterfordpubliclibrary)



[@waterfordlibraryct](https://www.instagram.com/waterfordlibraryct)

Either call the library to register or go to our Calendar of Events page on our website.
www.waterfordpubliclibrary.org 860-444-5805, Adult Ext 2, Youth Services Ext. 3

Waterford Little League

Register online now for Spring Little League Season!

We are currently updating our website so to register for the upcoming season please scan the QR code



or go to

<https://leagues.bluesombrero.com/waterfordct>

2024 Spring Season Registration fees:

Majors/Minors - \$150

Coach Pitch - \$100

Co-ed Tee Ball - \$85

Payment Plans available!
Family discount for families
with 3 or more players.

Important Registration Dates:

Majors/Minors

\$25 late registration fee begins 1/1
Registration closes 1/15

Coach Pitch

\$25 late registration fee begins 2/1
Registration closes 2/15



Please email
Registration@wllct.org with any
registration questions.

CONNECT WITH US



January Lunch Menu



JANUARY 2024 WATERFORD SCHOOLS K-12

LUNCH PRICES
 Elementary \$3.25
 CLMS \$3.50
 WHS \$3.75
 *Second Meal=\$4.25 - Adult Meal \$5.00

Please visit www.myschoolbucks.com to add funds to your child's account.

| Monday | Tuesday | Wednesday | Thursday | Friday |
|---|---|---|---|---|
| 1 School Holiday | 2 Marinara sauce Cheesy Italian -pull-a-parts Marinara sauce Broccoli with ranch cup Cucumber slices Diced peaches Milk | 3 Diced chicken Taco salad Tostitos salsa Golden corn Black beans 100% frozen fruit juice Sidekick Ice Cold Milk | 4 <i>National Spaghetti day!</i> Meatballs & sauce Green beans Garlic knot Diced pears Milk | 5 Chicken Nuggets Smile fries Peas Warm Dinner roll Applesauce Ice Cold Milk |
| 8 <i>Meatless Monday!</i> Cheese pizza Square Baby carrots Cucumber wheels Ranch dressing Diced peaches Milk | 9 <i>"Brunch for Lunch"</i> French toast Sticks/syrup Chicken sausage links Potato tots Mango juice Strawberry cup Milk | 10 Chicken tenders Potato wedges Golden Corn Oven baked biscuit Apple sauce Ice Cold Milk | 11 <i>"Italian Combo"</i> Breaded Ravioli Mozzarella sticks Marinara sauce WG Breadstick Green beans Diced pears Milk | 12 Cheeseburger Sandwich salad cup (Lett & Tom) Baked beans Oven fries 100% Frozen fruit juice Sidekick Ice cold Milk |
| 15 School Holiday | 16 <i>"Yang's" Orange chicken</i> Brown Rice Green beans Warm dinner roll Applesauce Milk | 17 Beef & Cheese Tacos Brown Rice Fiesta beans Mini corn muffin Mango juice Milk | 18 <i>WHS exams</i> Big daddy Cheese Pizza Broccoli Cucumber slices Ranch cup Apple slices Ice cold Milk | 19 <i>WHS exams</i> Crispy Chicken patty on a WG Roll Potato wedges Diced Carrots Orange Smiles Milk |
| 22 <i>WHS/exams</i> <i>Meatless Monday!</i> Pizza Bites Cucumber wheels Fresh broccoli Ranch Dip Cup Apple juice Milk | 23 <i>WHS/exams</i> Hotdog on a roll Oven fries Baked beans 100% frozen fruit juice Sidekick Ice Cold Milk | 24 Pasta with Meat sauce Garden salad Garlic knot Diced peaches Ice Cold Milk | 25 Beef Nachos Cheddar cheese sauce Fiesta beans Brown Rice Corn muffin Mango juice Orange smiles Milk | 26 Grilled chicken on a WG Roll BBQ sauce cup Sweet Potato Fries Broccoli Applesauce Milk |
| 29 <i>Meatless Monday!</i> Macaroni & Cheese Steamed Broccoli Sliced Carrots Warm Dinner Roll Diced Pears Milk | 30 Cheeseburger Sandwich Salad Cup Baked Beans Oven Fries Apple Milk | 31 Chicken & Waffles Syrup cup Sweet Potato Fries Green beans Apple sauce Milk | | |

For the 23-24 school year, students qualified for **Reduced status** will receive one lunch at no cost per day.

All grain-based items offered are whole-grain rich which means that at least 51% of the grains in the item are whole grain (WG), all other grains are enriched.
A VARIETY OF FRESH FRUITS & VEGETABLES OFFERED DAILY "Thoroughly cooking meats, poultry, seafood, shellfish or eggs reduces the risk of foodborne illness"
Alternate Choice Yogurt Meal AVAILABLE Daily or Alternate Salad meal offered when available (See kitchen manager)
 Yogurt Meal =Yogurt, Mozzarella string cheese, baby carrots, craisins, goldfish crackers, dinner roll, milk Salad Meal=Garden salad with egg, cheese stick garlic knot, fruit choice, milk
Allergy Warning: Menu items may contain or come in contact with wheat, eggs, soy, nuts, and milk *Menus are subject to change
THIS INSTITUTION IS AN EQUAL OPPORTUNITY PROVIDER

January Breakfast Menu



JANUARY 2024 WATERFORD SCHOOLS K-12

One daily Breakfast at **no charge**
to all students this 2023-24 school year!

| Monday | Tuesday | Wednesday | Thursday | Friday |
|---|---|--|--|---|
| 1 <i>School Holiday!</i> | 2 Confetti Pancakes Or assorted WG Muffins Or cereal Choice Milk Fresh Fruit 100% fruit Juice | 3 Early Riser Egg/ Hashbrown Or assorted WG Muffins Or cereal Choice Milk Fresh Fruit 100% fruit Juice | 4 Egg & Cheese Breakfast Sandwich Or assorted WG Muffins Or cereal Choice Milk Fresh Fruit 100% fruit Juice | 5 Banana Bread Or assorted WG Muffins Or cereal Choice Milk Fresh Fruit 100% fruit Juice |
| 8 Maple Waffle Or assorted WG Muffins Or cereal Choice Milk Strawberry cup 100% Fruit Juice | 9 Egg & Cheese Breakfast Sandwich Or assorted WG Muffins Or cereal Choice Milk Fresh Fruit 100% fruit Juice | 10 French Toast Sticks Or assorted WG Muffins Or cereal Choice Milk Fresh Fruit 100% fruit Juice | 11 Mini Cinnamon Rolls Or assorted WG Muffins Or cereal Choice Milk Fresh Fruit 100% fruit Juice | 12 Early Riser Egg /Hashbrown Or assorted WG Muffins Or cereal Choice Milk Fresh Fruit 100% fruit Juice |
| 15 <i>School Holiday!</i> | 16 Early Riser Egg/ Hashbrown Or assorted WG Muffins Or cereal Choice Milk Fresh Fruit 100% fruit Juice | 17 Goody Breakfast Ring Or assorted WG Muffins Or cereal Choice Milk Fresh Fruit 100% fruit Juice | 18 <i>WHS midterm exam</i> Egg & Cheese on a Roll Or assorted WG Muffins Or cereal Choice Milk Fresh Fruit 100% fruit Juice | 19 <i>WHS midterm exams</i> Maple waffle Or assorted WG Muffins Or cereal Choice Milk Fresh Fruit 100% fruit Juice |
| 22 <i>WHS midterm exams</i> Early Riser Egg/ Hashbrown Or assorted WG Muffins Or cereal Choice Milk Fresh Fruit 100% fruit Juice | 23 <i>WHS midterm exams</i> Apple Frudel Or assorted WG Muffins Or cereal Choice Milk Fresh Fruit 100% fruit Juice | 24 Egg & Cheese Breakfast Sandwich Or assorted WG Muffins Or cereal Choice Milk Fresh Fruit 100% fruit Juice | 25 Banana Bread Or assorted WG Muffins Or cereal Choice Milk Fresh Fruit 100% fruit Juice | 26 Cheese Omelet Or assorted WG Muffins Or cereal Choice Milk Fresh Fruit 100% fruit Juice |
| 29 WG Blueberry munchkins Or assorted WG Muffins Or cereal Choice Milk Fresh Fruit 100% fruit Juice | 30 Egg & Cheese Breakfast Sandwich Or assorted WG Muffins Or cereal Choice Milk Fresh Fruit 100% fruit Juice | 31 Cinnamon Oatmeal Breakfast Round Or assorted WG Muffins Or cereal Choice Milk Fresh Fruit 100% fruit Juice | Alternate choice of assorted cereals and muffins Available daily/Fruit & milk included | |

Please visit www.myschoolbucks.com to add funds to your child's account.

All grain-based items offered are whole-grain rich which means that at least 51% of the grains in the item are *whole grain (WG)*, all other grains are enriched
A VARIETY OF FRESH FRUITS OFFERED DAILY "Thoroughly cooking meats, poultry, seafood, shellfish or eggs reduces the risk of foodborne illness"
Allergy Warning: Menu items may contain or come in contact with wheat, eggs, soy, nuts, and milk *Menus are subject to change
THIS INSTITUTION IS AN EQUAL OPPORTUNITY PROVIDER

January Pre-K Menu

BREAKFAST **JANUARY 2024** * 1 daily Breakfast at "no cost" for all students this school year!
LUNCH WATERFORD SCHOOLS PRE-K BREAKFAST AND LUNCH LUNCH \$3.25 MILK ONLY \$.75
 Milk choices: 1% White or skim

Please visit www.myschoolbucks.com to check balance and/or add funds to your child's account.

| Monday | Tuesday | Wednesday | Thursday | Friday |
|---------------------------------------|--|--|--|--|
| SCHOOL HOLIDAY! | 1 Confetti Pancakes 100% juice Milk Cheesy -pull- a -parts Marinara sauce Broccoli & Ranch dip Diced peaches Milk | 2 Early Riser Egg/ Hashbrown 100% Fruit Juice Milk Soft Chicken & Cheese Taco Corn Applesauce Milk | 3 Egg & Cheese on a roll Applesauce cup Milk Spaghetti & meatballs Green beans Pears Milk | 4 Banana Bread Milk Cheese stick Apple slices Chicken nuggets Smile fries Peas Milk |
| Cereal Milk Orange smiles | 8 Pizza square Cucumber Wheels Diced peaches Milk | 9 Banana Bread 100% juice Milk French toast sticks Potato tots Strawberry cups Milk | 10 French Toast Sticks Blueberry Cup Milk Chicken Drumsticks Corn Applesauce Milk | 11 Yogurt/mini muffin Apple slices Milk Sun butter Sandwich Mozzarella string cheese Cucumber slices Milk |
| SCHOOL HOLIDAY | 15 Cereal Milk Orange smiles Chicken Nuggets Mashed potatoes Applesauce Milk | 16 Banana Bread Milk Cheese stick apple slices Soft beef & Cheese Taco Brown Rice Orange Smiles Milk | 17 Cereal Banana Milk Pizza Slice Cucumber slices Apple slices Milk | 18 Yogurt/mini muffin Apple slices Milk Chicken Patty on a WG Roll Potato wedges diced carrots Milk |
| Cereal Milk 100% Fruit Juice | 22 Pizza Bites Milk Cucumber wheels Fresh broccoli Ranch cup | 23 Mini muffin /cheese stick Strawberry cup Milk Sun butter Sandwich Mozzarella string cheese Cucumber slices Milk | 24 Cereal Banana Milk Pasta with meat sauce Garden salad Diced Peaches Milk | 25 Banana Bread Milk Cheese stick Apple slices Soft Taco Brown rice Orange smiles Milk |
| Yogurt/mini muffin 100% Juice Milk | 29 Cereal Banana Milk Cheeseburger on a WG Roll Baked beans Applesauce cup Milk | 30 Oatmeal breakfast round Apple slices Milk Chicken & waffles Green beans Milk | 26 Cheese omelet 100% juice Goldfish graham's Milk Chicken Drumsticks Sweet potato fries Applesauce Milk | 26 For the 23-24 school year, students qualified for Reduced status will receive breakfast and lunch at no cost |

All grain-based items offered are whole-grain rich which means that at least 51% of the grains in the item are whole grain (WG), all other grains are enriched

A VARIETY OF FRESH FRUITS & VEGETABLES OFFERED DAILY "Thoroughly cooking meats, poultry, seafood, shellfish or eggs reduces the risk of foodborne illness"

Alternate Choice Yogurt Meal available or Alternate Salad meal offered when available (See kitchen manager)

Yogurt Meal =Yogurt, Mozzarella string cheese, baby carrots, raisins, goldfish crackers, dinner roll, milk Salad Meal=Garden salad with egg, cheese stick garlic knot, fruit choice, milk

Allergy Warning: Menu items may contain or come in contact with wheat, eggs, soy, nuts, and milk

*Menus are subject to change

THIS INSTITUTION IS AN EQUAL OPPORTUNITY PROVIDER

2023-24 Elementary Letter Rotation Schedule

| August 2023 | | | | |
|-------------|-----|-----|-----|-----|
| Mon | Tue | Wed | Thu | Fri |
| | | | | |
| | | | | |
| | | | | |
| | | | | |
| | | 30 | 31 | |
| | | A | B | |

| September 2023 | | | | |
|----------------|-----|-----|-----|-----|
| Mon | Tue | Wed | Thu | Fri |
| | | | | 1 |
| | | | | C |
| | 5 | 6 | 7 | 8 |
| | D | A | B | C |
| 11 | 12 | 13 | 14 | 15 |
| D | A | B | C | D |
| 18 | 19 | 20 | 21 | 22 |
| A | B | C | D | A |
| | 26 | 27 | 28 | 29 |
| | B | C | D | A |

| October 2023 | | | | |
|--------------|-----|-----|-----|-----|
| Mon | Tue | Wed | Thu | Fri |
| 2 | 3 | 4 | 5 | 6 |
| B | C | D | A | B |
| | 10 | 11 | 12 | 13 |
| | C | D | A | B |
| 16 | 17 | 18 | 19 | 20 |
| C | D | A | B | C |
| 23 | 24 | 25 | 26 | 27 |
| D | A | B | C | D |
| 30 | 31 | | | |
| A | B | | | |

| November 2023 | | | | |
|---------------|-----|-----|-----|-----|
| Mon | Tue | Wed | Thu | Fri |
| | | 1 | 2 | 3 |
| | | C | D | A |
| 6 | | 8 | 9 | |
| B | | C | D | |
| 13 | 14 | 15 | 16 | 17 |
| A | B | C | D | A |
| 20 | 21 | | | |
| B | C | | | |
| 27 | 28 | 29 | 30 | |
| D | A | B | C | |

| December 2023 | | | | |
|---------------|-----|-----|-----|-----|
| Mon | Tue | Wed | Thu | Fri |
| | | | | 1 |
| | | | | D |
| 4 | 5 | 6 | 7 | 8 |
| A | B | C | D | A |
| 11 | 12 | 13 | 14 | 15 |
| B | C | D | A | B |
| 18 | 19 | 20 | 21 | 22 |
| C | D | A | B | C* |
| | | | | |
| | | | | |

| January 2024 | | | | |
|--------------|-----|-----|-----|-----|
| Mon | Tue | Wed | Thu | Fri |
| | 2 | 3 | 4 | 5 |
| | D | A | B | C |
| 8 | 9 | 10 | 11 | 12 |
| D | A | B | C | D |
| | 16 | 17 | 18 | 19 |
| | A | B | C | D |
| 22 | 23 | 24 | 25 | 26 |
| A | B | C | D | A |
| 29 | 30 | 31 | | |
| B | C | D | | |

| February 2024 | | | | |
|---------------|-----|-----|-----|-----|
| Mon | Tue | Wed | Thu | Fri |
| | | | 1 | 2 |
| | | | A | B |
| 5 | 6 | 7 | 8 | 9 |
| C | D | A | B | C |
| 12 | 13 | 14 | 15 | 16 |
| D | A | B | C | D |
| | | 21 | 22 | 23 |
| | | A | B | C |
| 26 | 27 | 28 | 29 | |
| D | A | B | C | |

| March 2024 | | | | |
|------------|-----|-----|-----|-----|
| Mon | Tue | Wed | Thu | Fri |
| | | | | 1 |
| | | | | D |
| 4 | 5 | 6 | 7 | 8 |
| A | B | C | D* | A |
| 11 | 12 | 13 | 14 | 15 |
| B | C | D | A | B |
| 18 | 19 | 20 | 21 | 22 |
| C | D | A | B | C |
| 25 | 26 | 27 | 28 | |
| D | A | B | C | |

| April 2024 | | | | |
|------------|-----|-----|-----|-----|
| Mon | Tue | Wed | Thu | Fri |
| 1 | | 3 | 4 | 5 |
| D | | A | B | C |
| | | | | |
| | | | | |
| 15 | 16 | 17 | 18 | 19 |
| D | A | B | C | D |
| 22 | 23 | 24 | 25 | 26 |
| A | B | C | D | A |
| 29 | 30 | | | |
| B | C | | | |

| May 2024 | | | | |
|----------|-----|-----|-----|-----|
| Mon | Tue | Wed | Thu | Fri |
| | | 1 | 2 | 3 |
| | | D | A | B |
| 6 | 7 | 8 | 9 | 10 |
| C | D | A | B | C |
| 13 | 14 | 15 | 16 | 17 |
| D | A | B | C | D |
| 20 | 21 | 22 | 23 | 24 |
| A | B | C | D | A |
| | 28 | 29 | 30 | 31 |
| | B | C | D | A |

| June 2024 | | | | |
|-----------|-----|-----|-----|-----|
| Mon | Tue | Wed | Thu | Fri |
| | | | | |
| | | | | |
| 3 | 4 | 5 | 6 | 7 |
| B | C | D | A | B |
| 10 | 11 | 12 | | |
| C | D* | A* | | |
| | | | | |
| | | | | |



No School
 * Early Dismissal
 Updated 12/20/2023

| August 2023 | | | | |
|-------------|-----|-----|-----|-----|
| Mon | Tue | Wed | Thu | Fri |
| | 1 | 2 | 3 | 4 |
| 7 | 8 | 9 | 10 | 11 |
| 14 | 15 | 16 | 17 | 18 |
| 21 | 22 | 23 | 24 | 25 |
| 28* | 29* | FD | 31 | |

(2 day ~ 2 cumulative)

- 8/28 – ± Staff Convocation
- 8/29 – * PD - No School – PK-12
- 8/30 – First Day of School

| September 2023 | | | | |
|----------------|-----|-----|-----|-----|
| Mon | Tue | Wed | Thu | Fri |
| | | | | 1 |
| SH | 5 | 6 | 7 | 8 |
| 11 | 12 | 13 | 14 | 15 |
| 18 | 19 | 20 | 21 | 22 |
| SH | 26 | 27 | 28 | 29 |

(19 days ~ 21 cumulative)

- 9/4 – School Holiday (Schools Closed)
- 9/25 – School Holiday (Schools Closed)

| October 2023 | | | | |
|--------------|-----|-----|-----|-----|
| Mon | Tue | Wed | Thu | Fri |
| 2 | 3 | 4 | 5 | 6 |
| SH | 10 | 11 | 12 | 13 |
| 16 | 17 | 18 | 19 | 20 |
| 23 | 24 | 25 | 26 | 27 |
| 30 | 31 | | | |

(21 days ~ 42 cumulative)

- 10/9 – School Holiday (Schools Closed)

| November 2023 | | | | |
|---------------|-----|----------------|-----|-----|
| Mon | Tue | Wed | Thu | Fri |
| | | 1 | 2 | 3 |
| 6 | PD | 8 | 9 | SH |
| 13 | 14 | 15 | 16 | 17 |
| 20 | 21 | School Holiday | | |
| 27 | 28 | 29 | 30 | |

(17 days ~ 59 cumulative)

- 11/7 – * PD No School for Students- PK-12
- 11/10 – School Holiday (Schools Closed for Students), P/T Conferences
- 11/22 – 11/24 – School Holiday (Schools Closed)

| December 2023 | | | | |
|----------------|-----|-----|-----|-----|
| Mon | Tue | Wed | Thu | Fri |
| | | | | 1 |
| 4 | 5 | 6 | 7 | 8 |
| 11 | 12 | 13 | 14 | 15 |
| 18 | 19 | 20 | 21 | 22 |
| School Holiday | | | | |

(16 days ~ 75 cumulative)

- 12/22 - Early Dismissal PK-12
- 12/25 – 12/29 – School Holiday (Schools Closed)

| January 2024 | | | | |
|--------------|-----|-----|-----|-----|
| Mon | Tue | Wed | Thu | Fri |
| SH | 2 | 3 | 4 | 5 |
| 8 | 9 | 10 | 11 | 12 |
| SH | 16 | 17 | 18 | 19 |
| 22 | 23 | 24 | 25 | 26 |
| 29 | 30 | 31 | | |

(21 days ~ 96 cumulative)

- 1/1 – School Holiday (Schools Closed)
- 1/15 – School Holiday (Schools Closed)
- 1/18-1/23 – ** Midterm Exams: Early Dismissal 9-12

| February 2024 | | | | |
|---------------|-----|-----|-----|-----|
| Mon | Tue | Wed | Thu | Fri |
| | | | 1 | 2 |
| 5 | 6 | 7 | 8 | 9 |
| 12 | 13 | 14 | 15 | 16 |
| SH | 21 | 22 | 23 | |
| 26 | 27 | 28 | 29 | |

(19 days ~ 115 cumulative)

- 2/19-2/20 – School Holiday (Schools Closed)

| March 2024 | | | | |
|------------|-----|-----|-----|-----|
| Mon | Tue | Wed | Thu | Fri |
| | | | | 1 |
| 4 | 5 | 6 | PT | 8 |
| 11 | 12 | 13 | 14 | 15 |
| 18 | 19 | 20 | 21 | 22 |
| 25 | 26 | 27 | 28 | SH |

(20 days ~ 135 cumulative)

- ** 3/7 – P/T Conferences: Early Dismissal PK-12
- 3/29 - School Holiday (Schools Closed)

| April 2024 | | | | |
|----------------|-----|-----|-----|-----|
| Mon | Tue | Wed | Thu | Fri |
| 1 | PD | 3 | 4 | 5 |
| School Holiday | | | | |
| 15 | 16 | 17 | 18 | 19 |
| 22 | 23 | 24 | 25 | 26 |
| 29 | 30 | | | |

(16 days ~ 151 cumulative)

- 4/2 – * PD No School for Students – PK-12
- 4/8 - 4/12 – School Holiday (Schools Closed)

| May 2024 | | | | |
|----------|-----|-----|-----|-----|
| Mon | Tue | Wed | Thu | Fri |
| | | 1 | 2 | 3 |
| 6 | 7 | 8 | 9 | 10 |
| 13 | 14 | 15 | 16 | 17 |
| 20 | 21 | 22 | 23 | 24 |
| SH | 28 | 29 | 30 | 31 |

(22 days ~ 173 cumulative)

- 5/27 – School Holiday (Schools Closed)

| June 2024 | | | | |
|-----------|-----|-----|-----|-----|
| Mon | Tue | Wed | Thu | Fri |
| | | | | |
| 3 | 4 | 5 | 6 | 7 |
| 10 | 11 | LD | 13 | 14 |
| 17 | 18 | 19 | 20 | 21 |
| 24 | 25 | 26 | 27 | 28 |

(8 days ~ 181 cumulative)

- 6/6 – 6/11 – ** Final Exams: Early Dismissal 9-12
- 6/11 - ** Early Dismissal PK-12
- 6/12 – Last Day of School Early Dismissal PK-12



NOTE: Snow days will be added onto the school year as needed.

BOE Approved: December 8, 2022
 Revision Approved: December 19, 2023

± Staff Convocation is for all staff of the Waterford Public Schools
 * Professional Development is for Administrators, Teachers, Paraprofessionals 8 AM-3 PM
 ** Full day for Paraprofessionals